

# Climbing

Mike Nock

Freely (♩ = ca. 75)

Even 8ths ♩ = 75

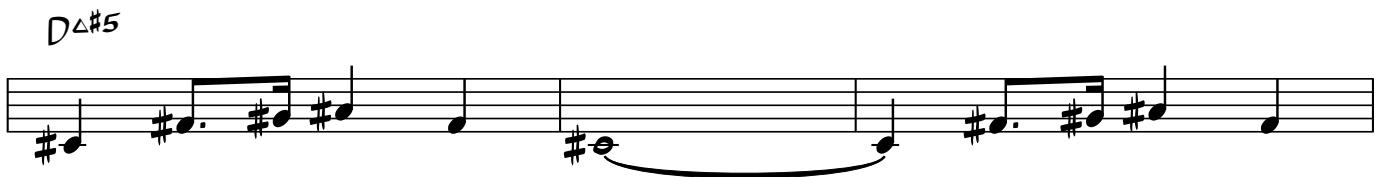
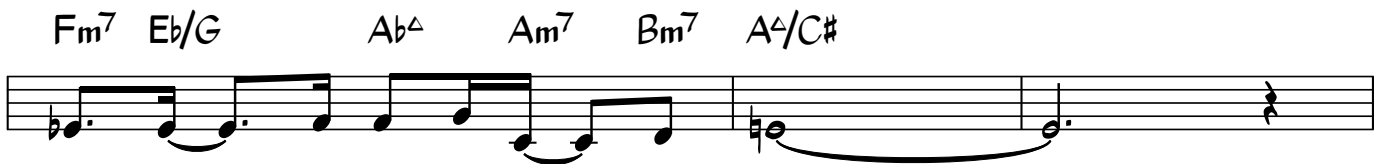
Solo piano introduction

A Aeolian

Open

Bass enters gradually Drums enter

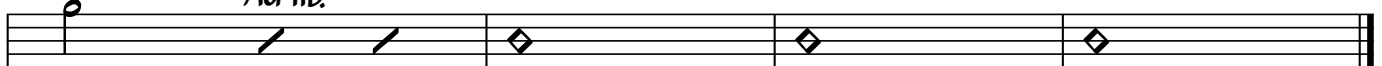
4



(Freely)

F<sup>#</sup>7<sup>b9</sup>/B (B harmonic minor)

Ad lib.



(Solo changes)

Am<sup>7</sup> (A Aeolian)

A musical staff with five measures. The first four measures contain diagonal slashes. The fifth measure contains a fermata symbol. A circled number '4' is positioned above the staff at the end of the fifth measure.

Fm<sup>7</sup>

A<sup>4</sup>/C<sup>#</sup>

E<sup>7sus</sup>

A musical staff with five measures. The first two measures contain diagonal slashes. The third measure contains a fermata symbol. The fourth measure contains diagonal slashes. The fifth measure contains a fermata symbol.

E<sup>7sus</sup>

C<sup>4</sup>/E

E<sup>7sus</sup>

Gm<sup>7</sup>

B<sup>4</sup>/D<sup>#</sup>

A musical staff with five measures. The first four measures contain diagonal slashes. The fifth measure contains a fermata symbol.

D<sup>Δ</sup>#<sup>5</sup>

E<sup>Δ</sup>#<sup>5</sup>

F<sup>7sus</sup> F<sup>7</sup>

G<sup>b</sup>Δ<sup>#</sup><sup>5</sup>

G<sup>7sus</sup> G<sup>7</sup>

A musical staff with five measures. The first measure contains diagonal slashes. The second measure contains a fermata symbol. The third measure contains a fermata symbol. The fourth measure contains diagonal slashes. The fifth measure contains diagonal slashes.

A<sup>b</sup>Δ<sup>#</sup><sup>5</sup>

Am<sup>7</sup>

F<sup>#</sup>7<sup>b</sup>9/B (B harmonic minor)

4

A musical staff with five measures. The first measure contains diagonal slashes. The second measure contains a melodic line with an accent (>) and a diamond-shaped articulation mark. The third measure contains a fermata symbol. The fourth measure contains a fermata symbol. The fifth measure contains a fermata symbol. A circled number '4' is positioned above the staff at the end of the fifth measure.

After solos, D.S. al Fine