

Ascent

Lyle Mays

Intro ♩ = 70 Even 8ths (16th-note undercurrent)

Intro musical score for Piano and Bass. The piano part is in 4/4 time, starting with a piano dynamic. The bass part features a steady eighth-note undercurrent. The score is divided into three sections: 'Piano', 'Till cue', and 'On cue'. A 'Fade in' line is indicated below the bass staff.

A Soprano sax. Section A musical score for Soprano saxophone. The melody is in 4/4 time, starting with a Dm7 chord. The bass line provides harmonic support with chords Dm7, FΔ, and Am7. A triplet of eighth notes is marked with a '3' and a bracket.

Sop. & gtr. Section A musical score for Soprano saxophone and guitar. The melody is in 4/4 time, starting with a Gm7 chord. The bass line provides harmonic support with chords Gm7, Fm7, Ebm7, Fm7, and Dm7.

B Section B musical score for Soprano saxophone. The melody is in 4/4 time, starting with an Am7 chord. The bass line provides harmonic support with chords Am7, CΔ, Em7, Dm7, Cm7, Bbm7, and Abm7. A triplet of eighth notes is marked with a '3' and a bracket.

Sop. & gtr. Section B musical score for Soprano saxophone and guitar. The melody is in 4/4 time, starting with a Gm7 chord. The bass line provides harmonic support with chords Gm7 and C7sus.

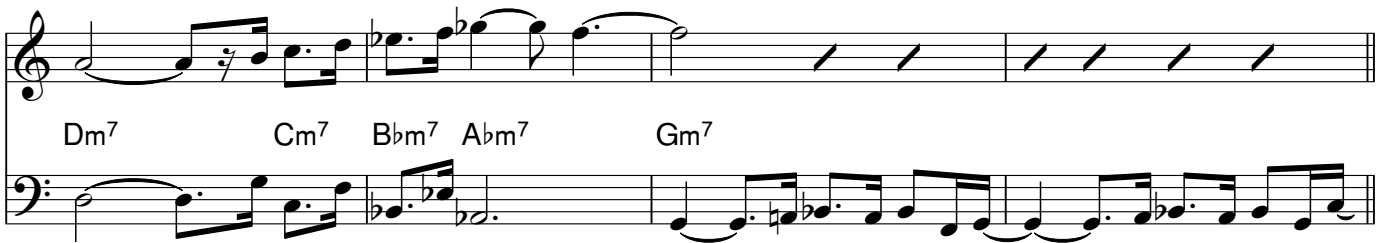
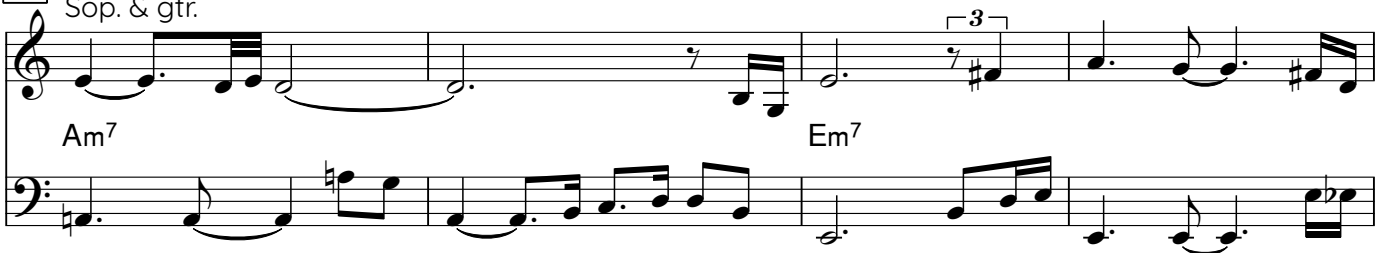
Sop. & gtr. Section B musical score for Soprano saxophone and guitar. The melody is in 4/4 time, starting with a Gm7 chord. The bass line provides harmonic support with chords Gm7 and C7sus.

C C#m7

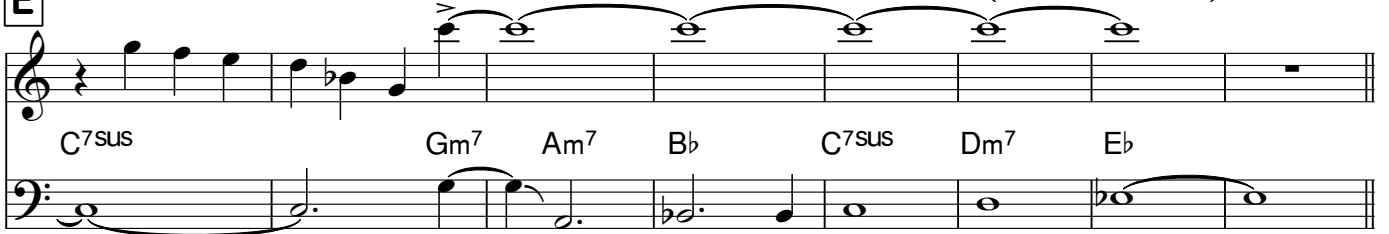
Bbm7

**D**

Sop. & gtr.

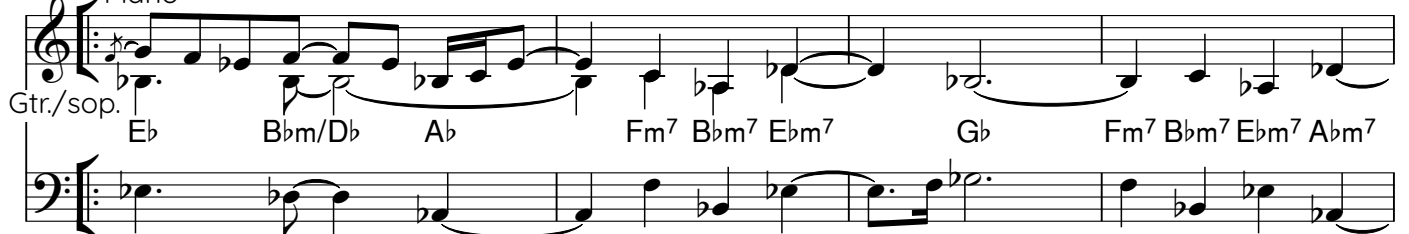
**E**

(Drums cool down)

**F**

Start softly and build gradually; last x dim. and end on fermata/fine

Piano

*poco a poco cresc. – last x dim.*

[Fine]

