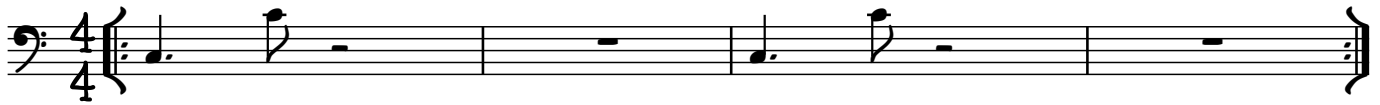


PHANTOM OF THE CITY

FAST LATIN
C PEDAL

GEORGE CABLES



A ADD³
C7SUS

First system of the main melody and bass line. The melody is in treble clef and the bass line is in bass clef. The key signature has one flat (B-flat). The melody consists of quarter notes and eighth notes, with a C pedal indicated above the first measure.

ADD³
C7SUS AbΔ#11/C

Second system of the main melody and bass line. The melody is in treble clef and the bass line is in bass clef. The key signature has one flat (B-flat). The melody consists of quarter notes and eighth notes, with a C pedal indicated above the first measure.

ADD³
C7SUS E7/C

Third system of the main melody and bass line. The melody is in treble clef and the bass line is in bass clef. The key signature has one flat (B-flat). The melody consists of quarter notes and eighth notes, with a C pedal indicated above the first measure.

E7/C D/C C7 N.C.

Fourth system of the main melody and bass line. The melody is in treble clef and the bass line is in bass clef. The key signature has one flat (B-flat). The melody consists of quarter notes and eighth notes, with a C pedal indicated above the first measure.

Bm7 G/A F#/G# [FINE]

Fifth system of the main melody and bass line. The melody is in treble clef and the bass line is in bass clef. The key signature has two sharps (F# and C#). The melody consists of quarter notes and eighth notes, with a C pedal indicated above the first measure.

F#/A# Bm7 CΔ#11 N.C. 2ND X: D.S. FOR SOLOS

Sixth system of the main melody and bass line. The melody is in treble clef and the bass line is in bass clef. The key signature has two sharps (F# and C#). The melody consists of quarter notes and eighth notes, with a C pedal indicated above the first measure.

AFTER SOLOS, D.S. (WITH REPEAT) AL FINE