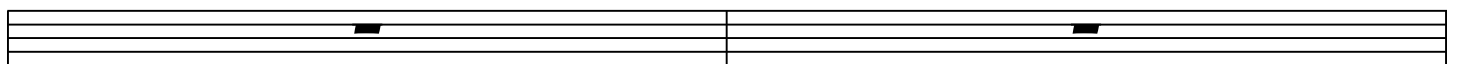
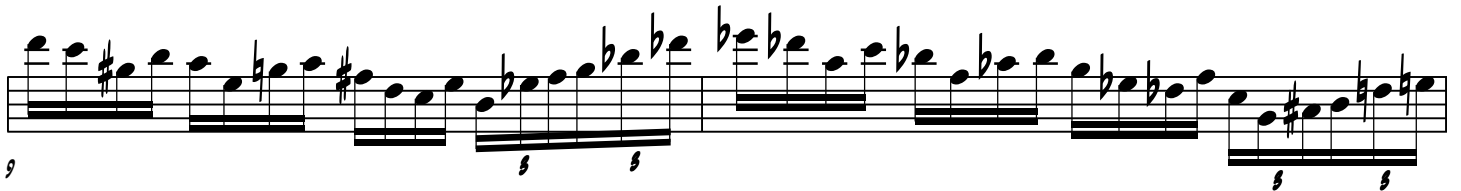
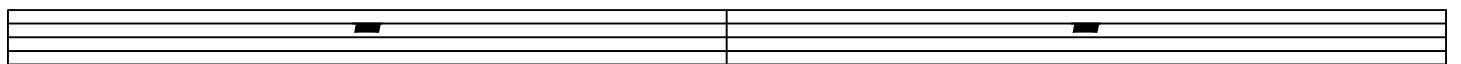


# SMALL ROSE ETUDE

ED BYRNE



13

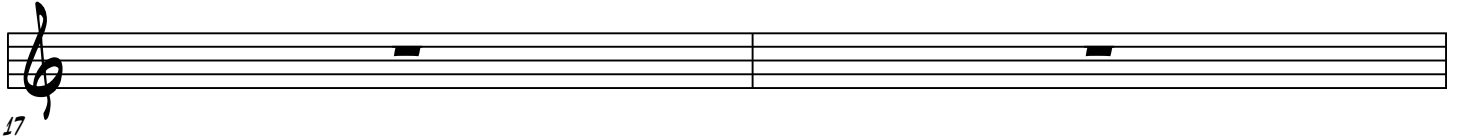


15

2

(TITLE)

17



A musical staff with a treble clef and a key signature of one flat. The staff is divided into two measures by a bar line. Each measure contains a single eighth note on the second line of the staff. The first measure is followed by a repeat sign.

19



A musical staff divided into two measures by a bar line. Each measure contains a single eighth note on the second line of the staff. The first measure is followed by a repeat sign.

21



A musical staff divided into two measures by a bar line. Each measure contains a single eighth note on the second line of the staff. The first measure is followed by a repeat sign.

23



A musical staff divided into two measures by a bar line. Each measure contains a single eighth note on the second line of the staff. The first measure is followed by a repeat sign.

25



A musical staff divided into two measures by a bar line. Each measure contains a single eighth note on the second line of the staff. The first measure is followed by a repeat sign.

27




A musical staff divided into two measures by a bar line. Each measure contains a single eighth note on the second line of the staff. The first measure is followed by a repeat sign.

29



A musical staff divided into two measures by a bar line. Each measure contains a single eighth note on the second line of the staff. The first measure is followed by a repeat sign.

31



A musical staff divided into two measures by a bar line. Each measure contains a single eighth note on the second line of the staff. The first measure is followed by a repeat sign.